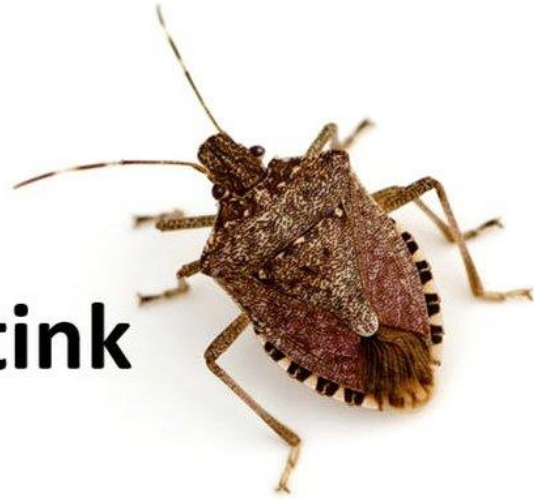




Australian Government
**Department of Agriculture
and Water Resources**

Brown Marmorated Stink Bug (BMSB)



LCL TREATMENT PLAN

During the BMSB season (from 1 September 2018 to 30 April 2019), ANZSS offer the following LCL loading- and BMSB treatment plan:

CLOSING DAY & TIME	: TUESDAY 1200HRS
LOADING DAY	: TUESDAY
TREATMENT DAY	: WEDNESDAY
TERMINAL DELIVERY DAY	: THURSDAY
SAILING DAY	: TUESDAY
TREATMENT METHOD	: HEAT TREATMENT
TREATMENT FEE	: UPON REQUEST

Closing day & time: the latest day and time you can deliver your LCL at our depot

Loading day: the day we are loading our groupage containers

Treatment day: the day our groupage containers are treated

Terminal delivery day: the day our groupage containers are delivered at the sea terminal

Sailing day: the day our groupage containers are shipped

Check our website and/or sailing schedule for the upcoming departures.

This plan is applicable to LCL with destination Sydney, Melbourne, Brisbane and Adelaide.
For LCL with destination Fremantle (West Australia) other measures apply; please contact your nearest ANZSS representative to discuss the options.